

Awning Tent Accessories

INSTALLATION KITS	
INSTALLATION KITS FOR THULE PANORAMA / THULE RESIDENCE G3	
Thule Transformation Kit 5002/5500/5800	152
INSTALLATION KITS FOR THULE QUICKFIT	
Overview	152
Thule Awning Fixation Kit TO 6300/6200/9200	153
Thule Universal Tent Fixation Kit	153
Thule Awning Fixation Kit TO 1200	154
Thule Tent LED Mounting Rail TO 5200	154
Thule Tent LED Mounting Rail TO 6300/6200	155
Thule Awning Fixation Kit Fiamma	155
Thule Side Tensioning Kit	156
Thule Projection Kit	156
AWNING TENT ACCESSORIES	
Thule Curtains	157
Thule Mosquito	157
Thule Windslip	158
Thule Wheelcover	158
Thule Front Connection Profiles	159
Thule Luxury Storage Bags	159
Thule TO 6300 Sealing rope	160


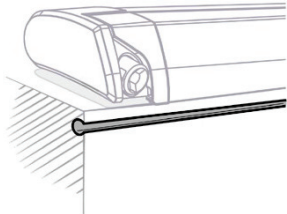

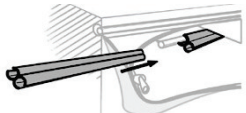

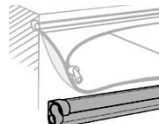



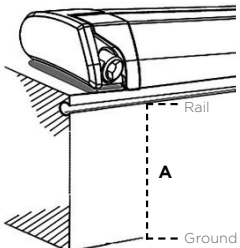

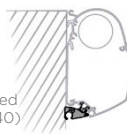

Thule Transformation Kit 5002/5500/5800

INFO

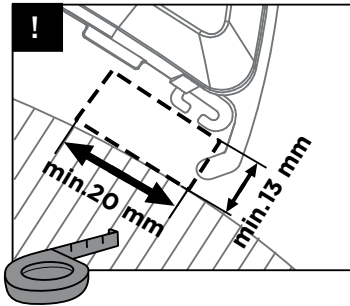
- Only applicable for Thule Panorama and Thule Residence G2 | G3 tents
- This transformation kit provides parts that can change the TO 5003/8000 mounting profiles that are delivered with the tent to the older generation of Thule Omnistor awnings: 5002/5500/5800

309623	Thule Transformation Kit TO 5002/5500/5800
--------	--

Installation Kits for Thule QuickFit - Overview

	Roof	Wall	Rail
Caravan	 <p>Original Caravan Rail All roof awnings</p> 	<p>Thule Universal Tent Fixation Kit All wall awnings 307205 307206</p> 	<p>Thule Awning Fixation Kit TO 1200 Only TO 1200 307063</p> 
		<p>Thule Tent LED Mounting Rail TO 5200 Only TO 5200 3012XX</p> 	<p>Thule Universal Tent Fixation Kit All bag awnings 307205 307206</p> 
Motorhome - Van	<p>Thule Universal Tent Fixation Kit All roof awnings 307205 307206</p> 	<p>Thule Universal Tent Fixation Kit All wall awnings 307205 307206</p> 	 A - Mounting height  <p>A = Distance between tent rail and ground</p>
	<p>Thule Awning Fixation Kit TO 6300/6200/ 9200 Only TO 6300/ 6200/9200 307050</p> 	<p>Thule Tent LED Mounting Rail TO 5200 Only TO 5200 3012XX Not compatible with Thule Adapter Ducato H2 Lift Roof Led (301950-301951-301940)</p> 	
	<p>Thule Tent LED Mounting Rail TO 6300/6200/ 9200 Only TO 6300/ 6200/9200 301664</p> 		

Thule Awning Fixation Kit TO 6300/6200/9200



INFO

- This profile makes it possible to mount the Thule QuickFit tent on roof awnings Thule Omnistor 6300/6200/9200
- Profile slides into the opening below the awning's cassette and is glued to prevent sliding
- The total length fits the largest Thule QuickFit tent
- Attention:
 - Cannot be combined with the Thule LED Mounting Rail TO 6300/6200/9200 (306777)
 - Minimum space between awning and vehicle must be provided
- Content:
 - 3 profiles (3x 1.30 m)
 - 2 plastic end caps

307050	Thule Awning Fixation Kit TO 6300/6200/9200
--------	---

Thule Universal Tent Fixation Kit

INFO

- Universal rail which makes it possible to mount a Thule QuickFit tent on vehicles without a free caravan rail to slide the tent in
- Glued on the awning's cassette or vehicle wall
- Available in 2 colours: white and anthracite
- Content:
 - 1 profile (4.00 m)
 - 2 plastic end caps

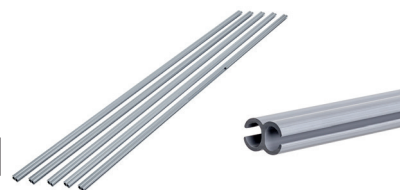


307205	Thule Universal Tent Fixation Kit - White
307206	Thule Universal Tent Fixation Kit - Anthracite

Thule Awning Fixation Kit TO 1200

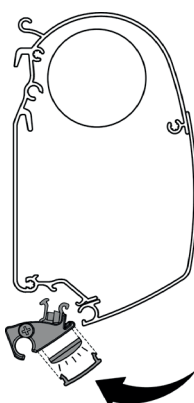
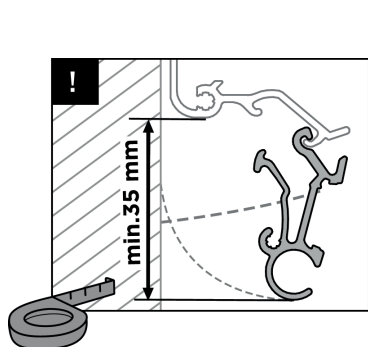
INFO

- This kit makes it possible to mount a Thule QuickFit tent on a Thule Omnistor 1200 bag awning
- Double-shaped PVC profiles to slide over the integrated sinew attached at the inner side of the bag awning
- Fits awning lengths until 4.50 m
- One profile has an open channel and can be used in the middle to go around the tension rafter and to slide a tent into
- Content:
 - 5 profiles (5x 1.00 m)



307063	Thule Awning Fixation Kit TO 1200
--------	-----------------------------------

Thule Tent LED Mounting Rail TO 5200



INFO

- This alu profile makes it possible to mount the Thule QuickFit tent on wall awning Thule Omnistor 5200
- The profile is clicked at the bottom of the awning cassette and is fixed with a hex wrench
- It covers the adapters and is provided with a channel to slide the tent in
- Additional space for a Thule LED Strip - to have light on the outside even when the awning is closed
- Available in different lengths and 3 colours: white, anodised and anthracite
- Content:
 - aluminium caravan profile
 - 2 end caps
 - diffuse filter for the LED channel

LENGTH	WEIGHT WITHOUT LED	WEIGHT WITH LED	WHITE	ANODISED	ANTHRACITE
3.00 m	1.2 kg	1.4 kg	301250	301255	301260
3.50 m	1.4 kg	1.6 kg	301251	301256	301261
4.00 m	1.6 kg	1.8 kg	301252	301257	301262
4.50 m	1.8 kg	2 kg	301253	301258	301263
5.00 m	2 kg		301254	301259	301278

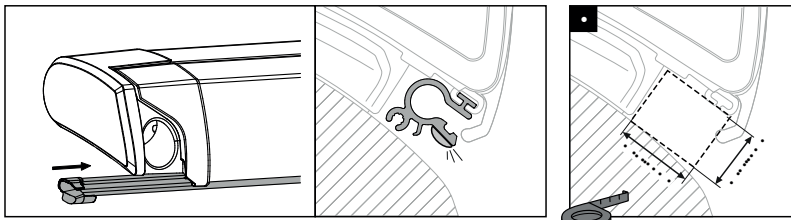
RELATED PRODUCT

- Thule LED Strip

Thule Tent LED Mounting Rail TO 6300/6200

INFO

- This caravan profile makes it possible to mount the Thule QuickFit tent on roof awnings
- This caravan profile can be slid at the bottom of roof awnings:
 - Thule Omnistor 6300 | 6200 mounted on a van
 - Thule Omnistor 6300 | 6200 | 9200 mounted on a motorhome, only if you have min. 24 mm depth and min. 17 mm height (see figure)
- Provided with a channel which makes it possible to install a Thule tent or to hang up the Thule Organizers
- Makes it possible to have light on the outside even when the awning is closed
- Fits only with the Thule LED Strip Sideways - not included
- Colour: anthracite
- Content:
 - 3 profiles (3x 1.30 m) to fit a 4.00 m awning length - can be cut to the required length
 - 2 end caps for a perfect finish



301664

Thule Tent LED Mounting Rail TO 6300/6200

RELATED PRODUCT

- Thule LED Strip Sideways - 301660



Thule Awning Fixation Kit Fiamma

INFO

- This kit makes it possible to mount a Thule QuickFit tent on Fiamma awnings
- Can be used on all tent lengths and secures the tent to the lead rail of the awning
- All Thule Omnistor awnings have a lead rail where the channel has a diameter of 7 mm
- Some other brands have a channel in the lead rail of diameter 5mm, for example Fiamma
- Connection pieces for Thule Omnistor awnings are always provided with the tent
- Content:
 - 8 pieces with sinew 5 mm diameter



307061

Thule Awning Fixation Kit Fiamma

Thule Side Tensioning Kit

INFO

- Set of 2 fiberglass poles to ensure a better sealing of the Thule QuickFit tent with the vehicle wall
- Mounted at each side of the tent to create extra tension
- Length: 2.80 m
- Content:
 - 2 fiberglass poles



307053

Thule Side Tensioning Kit

Thule Projection Kit

INFO

- This kit makes it possible to mount a Thule QuickFit tent on awnings with a projection larger than 2.50 m (2.75 - 3.00 m)
- Content:
 - 8 straps to attach to the existing straps on the tent



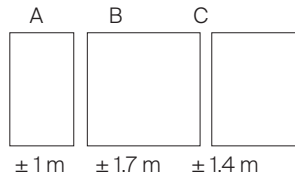
307052

Thule Projection Kit 2.75 m - 3.00 m

Thule Curtains

INFO

- Optional for Thule Veduta, Thule Panorama and Thule Residence G2 | G3 tents
- Curtains are made of 80% polyester and 20% cotton
- Available in grey
- The fabric can be ironed and washed at 50°



	Set	A	B	C	Tent	Tent length
301563	Set 1	4	2	0	Thule Residence G3	3.00 m - 4.00 m
					Thule Panorama	3.00 m - 4.50 m
301564	Set 2	2	2	2	Thule Residence G3	4.25 m - 5.00 m
301565	Set 3	6	2	0	Thule Residence G3	5.50 m - 6.00 m
					Thule Panorama	5.00 m - 6.00 m
					Thule Veduta	4.00 m - 5.00 m

Thule Mosquito

INFO

- Optional for Thule Panorama and Thule QuickFit awning tents
- Thanks to the modular panels of the Thule Panorama and Thule QuickFit tent, all panels can be unzipped and replaced by a panel made of mosquito mesh for extra ventilation
- Available for the side or the front
- Content:
 - 1 mosquito screen panel for side or front (see overview of Thule Panorama fronts to know which fronts are suitable for a mosquito screen)



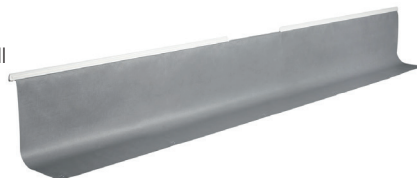
THULE PANORAMA	
309930	Thule Mosquito - Side
309931	Thule Mosquito - Front 4.00 m - 6.00 m

THULE QUICKFIT	
310321	Thule Mosquito - QuickFit Side
310322	Thule Mosquito - QuickFit Front 2.60 m
310323	Thule Mosquito - QuickFit Front 3.10 m / Ducato 3.00 m
310324	Thule Mosquito - QuickFit Front 3.60 m

Thule Windslip

INFO

- Included for Thule Veduta, Thule Panorama and Thule Residence G3 tents (with front panel) and optional for Thule Residence G2 tent
- Durable PVC windslip with a sewn kador to close the gap between the vehicle and the ground to prevent the wind from entering
- Can be mounted in the caravan rail or in an optional rail attached to the vehicle wall
- Different lengths available
- Height: 75 cm
- Content:
 - windslip
 - pegs



AWNING TENT LENGTH									
3.00 m	3.25 m	3.50 m	3.75 m	4.00 m	4.25 m	4.50 m	5.00 m	5.50 m	6.00 m
309613	309614	309615	309616	309617	309697	309618	309619	309620	309621

Thule Wheelcover

INFO

- Durable PVC wheelcover to cover your wheel to prevent the wind from entering
- Mounted with push buttons attached to the vehicle
- Thule Veduta: Wheelcover optional
- Thule Panorama:
 - Wheelcover included with Ducato H2 tent model
 - Wheelcover optional for other tent models
- Thule Residence G3
 - Wheelcover included with fronts of Ducato tent models
 - Wheelcover included with Eriba Touring tent model
 - Wheelcover optional for other Residence G3 sides or fronts
- Thule QuickFit
 - Wheelcover included



307397	Thule Wheelcover
--------	------------------

Thule Front Connection Profiles

INFO

- Optional for Thule Veduta and Thule Residence G3 tents
- Double-shaped connection profiles to slide in the integrated rope attached at the upper side of the front panel of the tent
- Possible to slide in a Thule Sun Blocker G2 front
- Content:
 - 6 profiles (6 x 1.00 m)



301567	Thule Front Connection Profiles
--------	---------------------------------

Thule Luxury Storage Bags

INFO

- Included for Thule Veduta, Thule Panorama and Thule Residence G3 tents
- Two black luxury bags to store the mounting profiles, the tent, pegs and pins, ...
- Made from high quality polyester
- Content:
 - 1 large bag: 20 x 30 x 120 cm (for front and side panels)
 - 1 small bag: 20 x 20 x 130 cm (for mounting profiles and fixation material)



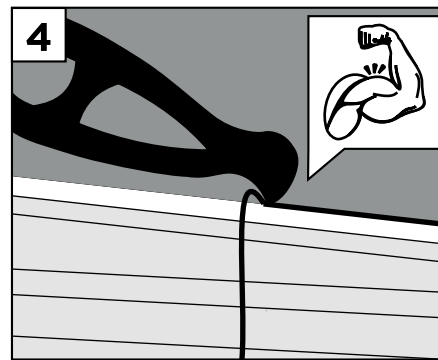
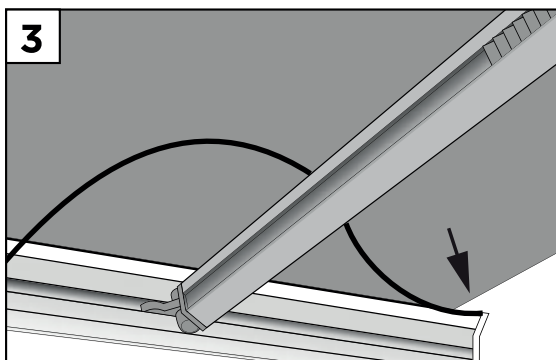
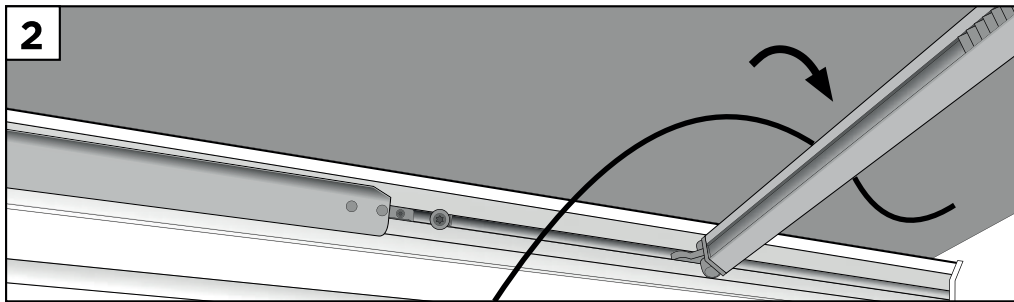
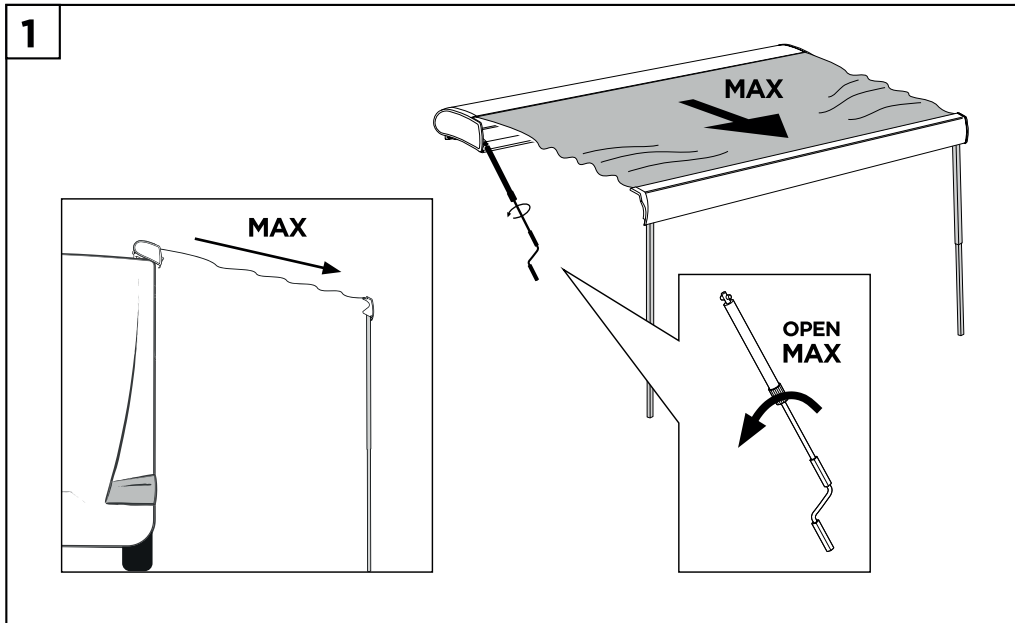
2x

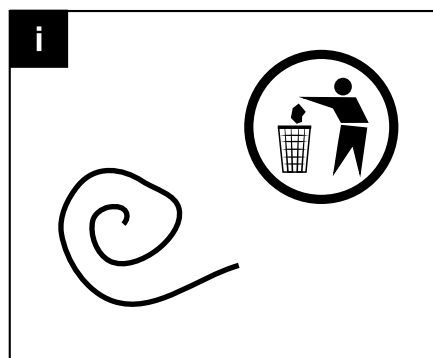
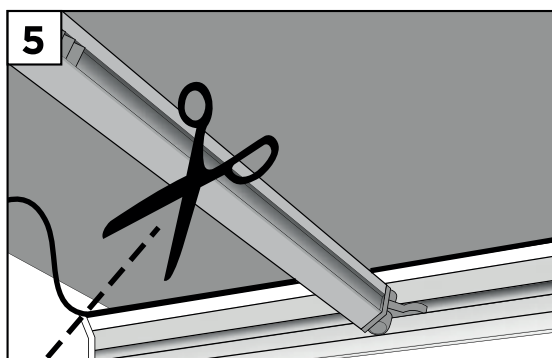
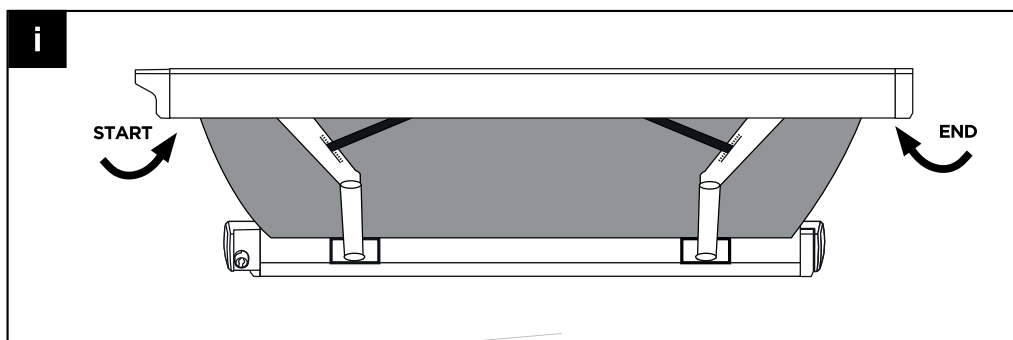
307139	Thule Luxury Storage Bags
--------	---------------------------

Thule TO 6300 Sealing rope

INFO

- Additional seal to prevent rainwater entering the tent along the lead rail
- For Thule Omnistor 6300 roof awning





1500603356	Thule TO 6300 Sealing rope
------------	----------------------------

